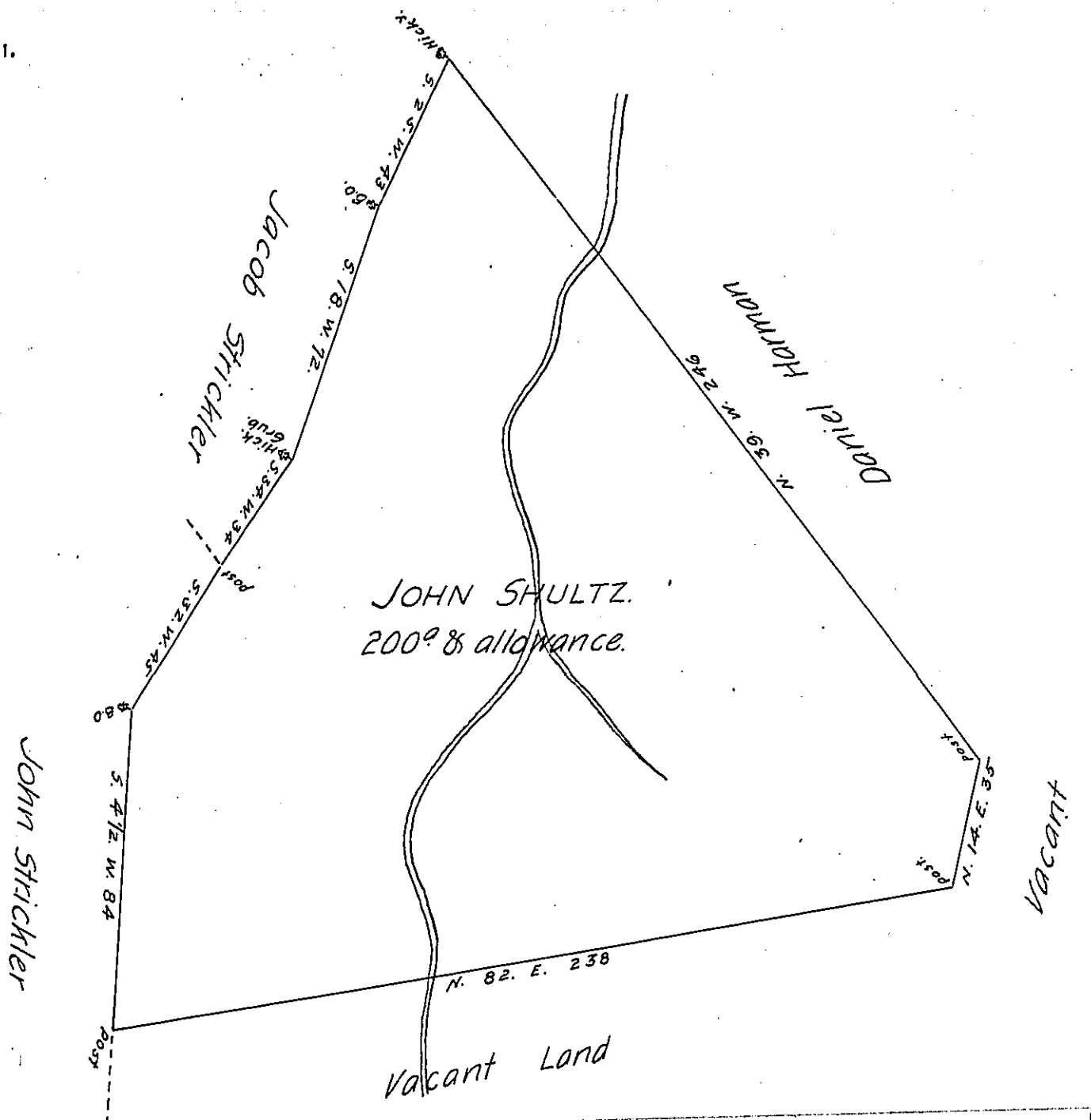


FORM NO. 1.



A Draught of a Tract of Land Containing Two hundred acres & allowance, situate in Hallem Township, in the County of York. Surveyed the 19<sup>th</sup> Day of June 1765, to John Shultz, in pursuance & as part of ~~the Original~~ a Warrant dated the 12<sup>th</sup> Day of March 1761, granted to Philip Epprecht for 500 Acres, being part of the Original purchase of 5000 Acres, made by John Ap, John & Thomas Wynn, of the late Honorable Proprietary W<sup>m</sup> Penn, Esq<sup>r</sup>, by Deeds of Lease & Release dated the 14<sup>th</sup> & 15<sup>th</sup> Days of September 1681.

Cha<sup>s</sup> Lukens, D. S.

To John Lukens, Esq<sup>r</sup>  
Surveyor General.

IN TESTIMONY that the above is a copy of the original remaining on file in the Department of Internal Affairs of Pennsylvania, made conformably to an Act of Assembly approved the 16th day of February, 1833, I have hereunto set my Hand and caused the Seal of said Department to be affixed at Harrisburg, this tenth day of October 1906.

*Isaac P. Brown*  
Secretary of Internal Affairs.